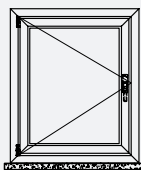
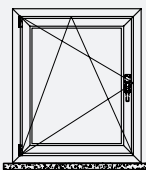
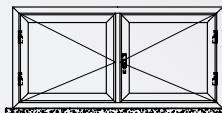
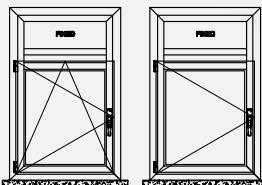
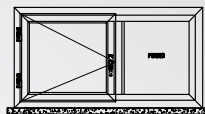
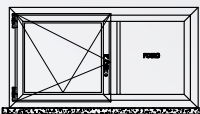
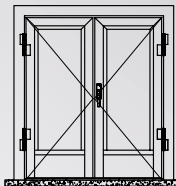
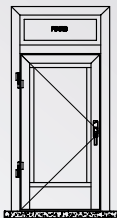
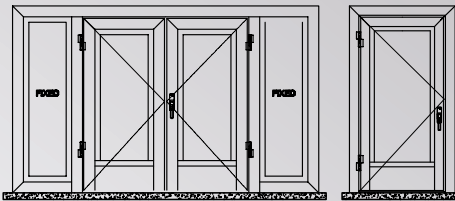
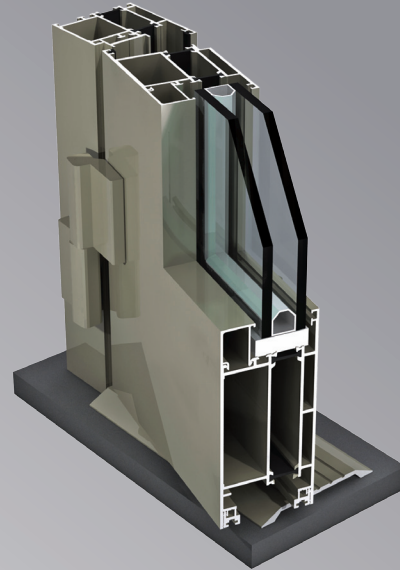


TB-600 SERIES

- Features Glass - 18mm to 38mm
- Alloys - 6063 / 6060/ 6061 / 6082
- System Performance:
- TB-600 has been tested at Al-Futtaim bodycote

Air Infiltration	ASTM E283-04
Water Penetration	ASTM E331-00 (Static)
Wind Resistance	ASTM E330-02 (Serviceability)
Wind Resistance	ASTM E330-02 (Safety)
- Frame: 60mm to 120mm
- Sash: 60mm to 67mm
- The System can be inward and outward opening
- The System can be used for Door, Window, Turn+Tilt window & Swing Door
- Assembly of the Frame & Sash cut 45°
- Thermal strip 18.6mm
- EPDM Gaskets
- Finishes:
 - Powder Coates
 - Anodizing
 - According to Shades available in Gulf Extrusions



TB-600 Series Hinged system is a unique, elegant 60mm width frame designed to achieve a better performance with a wide variety of frames available to cover the needed applications. It is designed for heavy duty use (H-HC40) according to the American National Standard. The results have been impressive to energy conservation, sound reduction, water and dust proofing. The importance of thermal conductivity in the aluminum frame becomes apparent when one considers that the frame accounts for an average of 25% of the total window surface.

Normal Aluminum Profiles $k=5.7 \text{ W/M}^2\text{K}$
With 16mm Thermal Strip $K=3.3 \text{ W/M}^2\text{K}$

All profiles are available in all colors in order to meet today's modern architectural requirements, along with the possibility of bi-coloration due to the separation done by the thermal break strips. For better performance of the System, Alignment cleats for the frame and the shutter are used. Durable weather sealment mastic is a must at all joints. Specially designed EPDM gaskets are made available with the system to enhance the performance and create easy assembly. Other accessories such as rollers and flush handles come as part of the system.

Sections:

The sections in gulf extrusions line are produced by extruding aluminum on a wide range of presses starting with a 800 tons to 4400 tons press. They are made of aluminum alloys 6060, 6063, 6082, 6005 according to British Standard Specification for extrusion Dimensions Tolerances BS EN 755-9:2008 and BS EN 12020-2:2008

Frame:

Tubular with a width of 60mm, a wide range of frames is available to suit most of the required application in the building codes.

Sash:

Tubular straight. They are 60 or 67 mm thick. A wide range available to cover all applications of doors, single and double leaves and outward openings even swing doors.

Assembly:

Assembly of the frames and sashes is done by 45° cut whereas door bottom on profiles are custom 90°.

Glazing:

Standard or insulating ranges from "18 to 38"mm maintained by 3 EPDM gaskets and a glazing bead must be on the inside installation.

Sealing:

Sealing is achieved by the compression of 3 EPDM gaskets pressured during closing.

Performance:

THERMAL SYSTEM

Casement & Turn + Tilt Window /HINGED DOOR

1. 18.6MM Polyamide strip can withstand up to 220°C with high thermal resistance to reduce heat transfer from $k= 5.7 \text{ W/M}^2\text{K}$ to $K=3.0 \text{ W/M}^2\text{K}$
2. Insulated glass unit, ensuring the performance of the system in terms of energy conservation and sound insulation.
3. Outer contact gasket for efficient sound insulation and sealing against water and dust.
4. Inner gasket to enhance the system performance.
5. Central sealing Gasket.
6. Special EPDM GASKETS TO HOLD GLASS IN POSITION.